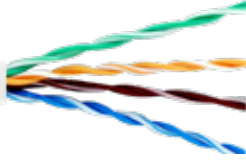


DATA KABLO

DATA CABLE

CAT.5E U/UTP

EMEK KABLO CAT.5E U/UTP



KULLANIM ALANLARI

ISDN - VoIP
 TOKEN RING 4/16 Mbit - 100 VG-AnyLAN
 TP-PMD / TP-DDI - ATM 155, 622,1200 Mbit
 ETHERNET: 10 Base T, 100 Base Tx, 100 Base T4, 1000 Base T

KABLO YAPISI

İletken	Mono tavlı bakır AWG24
İzolasyon	PO - Poliolen
Kılıf	PVC veya LSZH - 7035 Gri RAL
Standartlar	IEC 61156-5 / N 50288-3-1

TEKNİK ÖZELLİKLER

Direnç (max)	94 Ω / km
Empedans	1-100 MHz 100 \pm 15 Ω
Kapasite	Nominal 50 pF/m
Yayıma Hızı	69% c

APPLICATION

ISDN - VoIP
 TOKEN RING 4/16 Mbits - 100 VG-AnyLAN
 TP-PMD/TP-DDI - ATM 155, 622,1200 Mbits
 ETHERNET: 10 Base T, 100 Base Tx, 100 Base T4, 1000 Base T

CONSTRUCTION

Conductor	Solid annealed copper AWG24
Insulation	PO - Polyolefin
Jacket	PVC or LSZH - Grey RAL 7035
Standards	IEC 61156-5 / EN 50288-3-1

TECHNICAL SPECIFICATIONS

Resistance (max)	94 Ω / km
Impedance	1-100 MHz 100 \pm 15 Ω
Capacitance	Nominal at 50 pF/m
Velocity Of Propagation	69% c

MHz	INSERTION LOSS (dB/100 m)	NEXT (dB/100 m)	ACR-N (dB/100 m)	PSNEXT (dB/100 m)	ACR-F (dB/100 m)	PSACR-F (dB/100 m)	RETURN LOSS (dB/100 m)
1	2.0	65.3	63.3	62.3	63.8	60.8	20.0
4	4.1	56.3	52.2	53.3	51.8	48.8	23.0
10	6.5	50.3	43.8	47.3	43.8	40.8	25.0
16	8.2	47.2	39.1	44.2	39.7	36.7	25.0
20	9.3	45.8	36.5	42.0	37.8	34.8	25.0
25	10.4	44.3	33.9	41.3	35.8	32.8	24.3
31.25	11.7	42.9	31.2	39.9	33.9	30.9	23.6
62.5	17.0	38.4	21.4	35.4	27.9	24.9	21.5
100	22.0	35.3	13.3	32.3	23.8	20.8	20.1

CAT.5E F/UTP

EMEK KABLO CAT.5E F/UTP



KULLANIM ALANLARI

ISDN - VoIP
 TOKEN RING 4/16 Mbit - 100 VG-AnyLAN
 TP-PMD / TP-DDI - ATM 155, 622,1200 Mbit
 ETHERNET: 10 Base T, 100 Base Tx, 100 Base T4, 1000 Base T

KABLO YAPISI

İletken	Mono tavlı bakır AWG24
İzolasyon	PO - Poliolefin
Toprak Teli	Mono kalaylı bakır AWG26
Ekran	Al/PET folyo-%100 kapama
Kılıf	PVC veya LSZH - 7035 Gri RAL
Standartlar	IEC 61156-5 / EN 50288-2-1

TEKNİK ÖZELLİKLER

Direnç (max)	94 Ω / km
Empedans	1-100 MHz 100 \pm 15 Ω
Kapasite	Nominal 50 pF/m
Yayıma Hızı	69% c

APPLICATION

ISDN - VoIP
 TOKEN RING 4/16 Mbits - 100 VG-AnyLAN
 TP-PMD/TP-DDI - ATM 155, 622,1200 Mbits
 ETHERNET: 10 Base T, 100 Base Tx, 100 Base T4, 1000 Base T

CONSTRUCTION

Conductor	Solid annealed copper AWG24
Insulation	PO - Polyolefin
Drain Wire	Solid tinned copper AWG26
Shielding	Al/PET foil - 100% coverage
Jacket	PVC or LSZH - Grey RAL 7035
Standards	IEC 61156-5 / EN 50288-2-1

TECHNICAL SPECIFICATIONS

Resistance (max)	94 Ω / km
Impedance	1-100 MHz 100 \pm 15 Ω
Capacitance	Nominal at 50 pF/m
Velocity Of Propagation	69% c

MHz	INSERTION LOSS (dB/100 m)	NEXT (dB/100 m)	ACR-N (dB/100 m)	PSNEXT (dB/100 m)	ACR-F (dB/100 m)	PSACR-F (dB/100 m)	RETURN LOSS (dB/100 m)
1	2.0	65.3	63.3	62.3	63.8	60.8	20.0
4	4.1	56.3	52.2	53.3	51.8	48.8	23.0
10	6.5	50.3	43.8	47.3	43.8	40.8	25.0
16	8.2	47.2	39.1	44.2	39.7	36.7	25.0
20	9.3	45.8	36.5	42.0	37.8	34.8	25.0
25	10.4	44.3	33.9	41.3	35.8	32.8	24.3
31.25	11.7	42.9	31.2	39.9	33.9	30.9	23.6
62.5	17.0	38.4	21.4	35.4	27.9	24.9	21.5
100	22.0	35.3	13.3	32.3	23.8	20.8	20.1

CAT.5E SF/UTP

EMEK KABLO CAT.5E SF/UTP



KULLANIM ALANLARI

ISDN - VoIP
 TOKEN RING 4/16 Mbit - 100 VG-AnyLAN
 TP-PMD / TP-DDI - ATM 155, 622,1200 Mbit
 ETHERNET: 10 Base T, 100 Base Tx, 100 Base T4, 1000 Base T

KABLO YAPISI

İletken	Mono tavlı bakır AWG24
İzolasyon	PO - Poliolefin
Toprak Teli	Mono kalaylı bakır AWG26
1. Ekran	Al/PET folyo-%100 kapama
2. Ekran	Kalaylı bakır örgü
Kılıf	PVC veya LSZH - 7035 Gri RAL
Standartlar	IEC 61156-5 / EN 50288-2-1

TEKNİK ÖZELLİKLER

Direnç (max)	94 Ω / km
Empedans	1-100 MHz 100 \pm 15 Ω
Kapasite	Nominal 48 pF/m
Yayıma Hızı	69% c

APPLICATION

ISDN - VoIP
 TOKEN RING 4/16 Mbits - 100 VG-AnyLAN
 TP-PMD/TP-DDI - ATM 155, 622,1200 Mbits
 ETHERNET: 10 Base T, 100 Base Tx, 100 Base T4, 1000 Base T

CONSTRUCTION

Conductor	Solid annealed copper AWG24
Insulation	PO - Polyolefin
Drain Wire	Solid tinned copper AWG26
Shielding 1	Al/PET foil - 100% coverage
Shielding 2	Tinned copper braid
Jacket	PVC or LSZH - Grey RAL 7035
Standards	IEC 61156-5 / EN 50288-2-1

TECHNICAL SPECIFICATIONS

Resistance (max)	94 Ω / km
Impedance	1-100 MHz 100 \pm 15 Ω
Capacitance	Nominal at 48 pF/m
Velocity Of Propagation	69% c

MHz	INSERTION LOSS (dB/100 m)	NEXT (dB/100 m)	ACR-N (dB/100 m)	PSNEXT (dB/100 m)	ACR-F (dB/100 m)	PSACR-F (dB/100 m)	RETURN LOSS (dB/100 m)
1	2.0	65.3	63.3	62.3	63.8	60.8	20.0
4	4.1	56.3	52.2	53.3	51.8	48.8	23.0
10	6.5	50.3	43.8	47.3	43.8	40.8	25.0
16	8.2	47.2	39.1	44.2	39.7	36.7	25.0
20	9.3	45.8	36.5	42.0	37.8	34.8	25.0
25	10.4	44.3	33.9	41.3	35.8	32.8	24.3
31.25	11.7	42.9	31.2	39.9	33.9	30.9	23.6
62.5	17.0	38.4	21.4	35.4	27.9	24.9	21.5
100	22.0	35.3	13.3	32.3	23.8	20.8	20.1

CAT.6 U/UTP 250 MHZ

EMEK KABLO CAT.6 U/UTP 250 MHZ



ALEV GECİKTİRİCİ ÖZELLİK / DÜŞÜK DUMAN YOĞUNLUĞU / ZEHİRLİ VE KORUZİF GAZLARDAN ARINDIRILMIŞ
FLAME RETARDANT CHARACTERISTIC / LOW SMOKE EMISSION / WITHOUT POISONED AND CORROSIVE GASES

KULLANIM ALANLARI

ISDN - VoIP
TOKEN RING 4/16 Mbit - 100 VG-AnyLAN
TP-PMD / TP-DDI - ATM 155, 622, 1200 Mbit
ETHERNET: 10 Base T, 100 Base Tx, 100 Base T4 1000 Base T

KABLO YAPISI

İletken	Mono tavlı bakır AWG24 0,52/0,53/0,55 AWG23 0,56/0,57
İzolasyon	PO - Poliolenin
Separatör	PO - Poliolenin
Kılıf	PVC veya LSZH - 5024 Mavi RAL
Standartlar	IEC 61156-5 / EN 50288-6-1

TEKNİK ÖZELLİKLER

Direnç (max)	95 Ω / km
Empedans	1-100 MHz 100 ± 15 Ω / 100-250 MHz 100 ± 20 Ω
Kapasite	Nominal 48 pF/m
Yayıma Hızı	69% c
Efektif Kapasite (1 Kh)	48 pF/m
Çalışma Sıcaklığı	- 20°C~+70°C
Alev Geciktiricilik Testi	IEC 60332-1-2 / VDE 0482-332-1-2 / EN 60332-1-2
Duman Yoğunluğu	IEC 61034-2 / VDE 0482-1034-2 / EN 61034-2
Korozif Gaz Testi	IEC 60754-2 / VDE 0482-267-2-3 / EN 50267-2-3
Halojensizlik Testi	IEC 60754-1 / VDE 0482-267-2-1 / EN 50267-2-1
Alev Yayılımı Testi	IEC 60332-3-25 / VDE 0482-332-3-25 / EN 60332-2-25

APPLICATION

ISDN - VoIP
TOKEN RING 4/16 Mbits - 100 VG-AnyLAN
TP-PMD/TP-DDI - ATM 155, 622, 1200 Mbits
ETHERNET: 10 Base T, 100 Base Tx, 100 Base T4, 1000 Base T

CONSTRUCTION

Conductor	Solid annealed copper AWG24 0,52/0,53/0,55 AWG23 0,56/0,57
Insulation	PO - Polyolefin
Separator	PO - Polyolefin
Jacket	PVC or LSZH - Blue RAL 5024
Standards	IEC 61156-5 / EN 50288-6-1

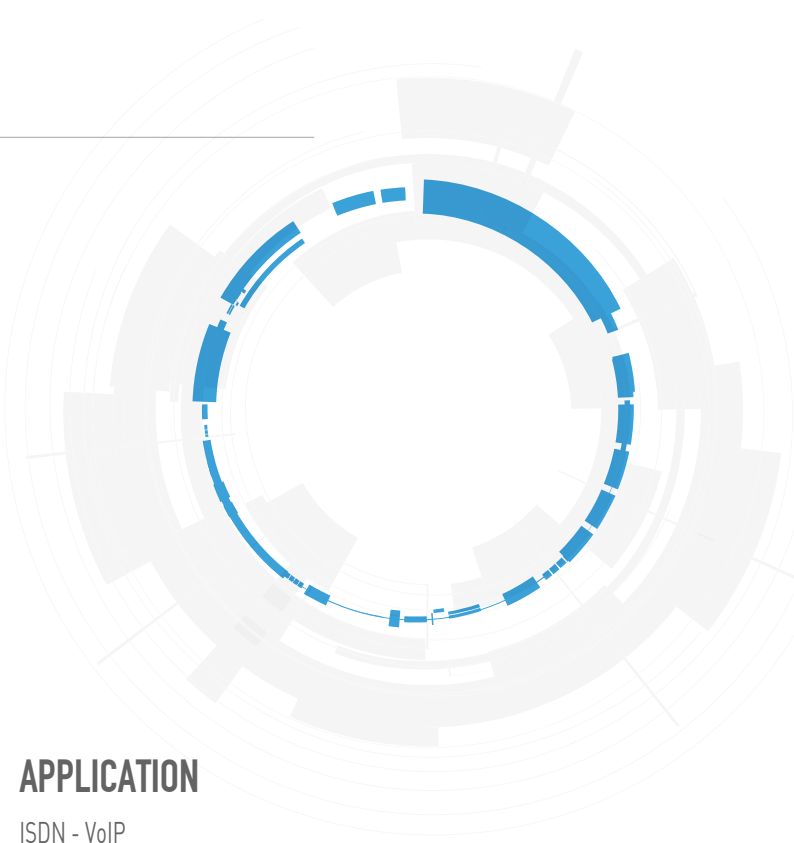
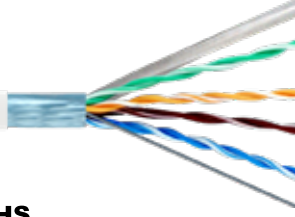
TECHNICAL SPECIFICATIONS

Resistance (max)	95 Ω / km
Impedance	1-100 MHz 100 ± 15 Ω / 100-250 MHz 100 ± 20 Ω
Capacitance	Nominal 48 pF/m
Velocity Of Propagation	69% c
Mutual Capacitance (1 Khz)	48 pF/m
Temperature Range	- 20°C~+70° C
Flame Retardant Test	IEC 60332-1-2 / VDE 0482-332-1-2 / EN 60332-1-2
Smoke Density Test	IEC 61034-2 / VDE 0482-1034-2 / EN 61034-2
Test On Corriiveness Of Com. Gases	IEC 60754-2 / VDE 0482-267-2-3 / EN 50267-2-3
Halogen Test Free	IEC 60754-1 / VDE 0482-267-2-1 / EN 50267-2-1
Flame Propagation Test	IEC 60332-3-25 / VDE 0482-332-3-25 / EN 60332-2-25

MHz	INSERTION LOSS (dB/100 m)	NEXT (dB/100 m)	ACR-N (dB/100 m)	PSNEXT (dB/100 m)	ACR-F (dB/100 m)	PSACR-F (dB/100 m)	RETURN LOSS (dB/100 m)
1	2.0	74.3	72.3	72.3	67.8	64.8	20.0
4	3.8	65.3	61.5	63.3	55.8	52.8	23.0
10	6.0	59.3	53.3	57.3	47.8	44.8	25.0
16	7.6	56.2	48.6	54.2	43.7	40.7	25.0
25	9.5	53.3	43.8	51.3	39.8	36.8	24.3
31.25	10.7	51.9	41.2	49.9	37.9	34.9	23.6
100	19.8	44.3	24.5	42.3	27.8	24.8	20.1
200	29.0	39.8	10.8	37.8	21.8	18.8	18.0
250	32.8	38.3	5.5	36.3	19.8	16.8	17.3

CAT.6 F/UTP 250 MHZ

EMEK KABLO CAT.6 F/UTP 250 MHZ



KULLANIM ALANLARI

ISDN - VoIP
 TOKEN RING 4/16 Mbit - 100 VG-AnyLAN
 TP-PMD / TP-DDI - ATM 155, 622, 1200 Mbit
 ETHERNET: 10 Base T, 100 Base Tx, 100 Base T4, 1000 Base T

KABLO YAPISI

İletken	Mono tavlı bakır AWG24 0,52/0,53/0,55 AWG23 0,56/0,57
İzolasyon	PO - Poliölefin
Separatör	PO - Poliölefin
Toprak Teli	Mono kalaylı bakır AWG26
Ekran	Al/PET folyo-%100 kapama
Kılıf	PVC veya LSZH - 5024 Mavi RAL
Standartlar	IEC 61156-5 / EN 50288-5-1

TEKNİK ÖZELLİKLER

Direnç (max)	95 Ω / km
Empedans	1-100 MHz 100 ± 15 Ω / 100-250 MHz 100 ± 20 Ω
Kapasite	Nominal 52 pF/m
Yayıma Hızı	69% c

APPLICATION

ISDN - VoIP
 TOKEN RING 4/16 Mbits - 100 VG-AnyLAN
 TP-PMD/TP-DDI - ATM 155, 622, 1200 Mbits
 ETHERNET: 10 Base T, 100 Base Tx, 100 Base T4, 1000 Base T

CONSTRUCTION

Conductor	Solid annealed copper AWG24 0,52/0,53/0,55 AWG23 0,56/0,57
Insulation	PO - Polyolefin
Separator	PO - Polyolefin
Drain Wire	Solid tinned copper AWG26
Shielding	Al/PET foil - 100% coverage
Jacket	PVC or LSZH - Blue RAL 5024
Standards	IEC 61156-5 / EN 50288-5-1

TECHNICAL SPECIFICATIONS

Resistance (max)	95 Ω / km
Impedance	1-100 MHz 100 ± 15 Ω / 100-250 MHz 100 ± 20 Ω
Capacitance	Nominal at 52 pF/m
Velocity Of Propagation	69% c

MHz	INSERTION LOSS (dB/100 m)	NEXT (dB/100 m)	ACR-N (dB/100 m)	PSNEXT (dB/100 m)	ACR-F (dB/100 m)	PSACR-F (dB/100 m)	RETURN LOSS (dB/100 m)
1	2.0	74.3	72.3	72.3	67.8	64.8	20.0
4	3.8	65.3	61.5	63.3	55.8	52.8	23.0
10	6.0	59.3	53.3	57.3	47.8	44.8	25.0
16	7.6	56.2	48.6	54.2	43.7	40.7	25.0
25	9.5	53.3	43.8	51.3	39.8	36.8	24.3
31.25	10.7	51.9	41.2	49.9	37.9	34.9	23.6
100	19.8	44.3	24.5	42.3	27.8	24.8	20.1
200	29.0	39.8	10.8	37.8	21.8	18.8	18.0
250	32.8	38.3	5.5	36.3	19.8	16.8	17.3

CAT.6A U/UTP 500 MHZ



KULLANIM ALANLARI

ISDN - VoIP
 TOKEN RING 4/16 Mbit - 100 VG-AnyLAN
 TP-PMD / TP-DDI - ATM 155, 622, 1200 Mbit
 ETHERNET: 10 Base T, 100 Base Tx, 100 Base T4, 1000 Base T, 10 G Base T
 IEEE 802.3af - PoE (Power Over Ethernet)

KABLO YAPISI

İletken	Mono tavlı bakır AWG23
İzolasyon	PO - Poliölefin
Separatör	PO - Poliölefin
Kılıf	PVC veya LSZH - 5024 Mavi RAL
Standartlar	IEC 61156-5 / EN 50288-11-1

TEKNİK ÖZELLİKLER

Direnç (max)	75 Ω / km
Empedans	1-100 MHz 100 \pm 15 Ω / 100-250 MHz 100 \pm 20 Ω 250-500 MHz 100 \pm 25 Ω
Kapasite	Nominal 48 pF/m
Yayıma Hızı	69% c

APPLICATION

ISDN - VoIP
 TOKEN RING 4/16 Mbits - 100 VG-AnyLAN
 TP-PMD/TP-DDI - ATM 155, 622, 1200 Mbits
 ETHERNET: 10 Base T, 100 Base Tx, 100 Base T4, 1000 Base T, 10 G Base T
 IEEE 802.3af - PoE (Power Over Ethernet)

CONSTRUCTION

Conductor	Solid annealed copper AWG23
Insulation	PO - Polyolefin
Separator	PO - Polyolefin
Jacket	PVC or LSZH - Blue RAL 5024
Standarts	IEC 61156-5 / EN 50288-11-1

TECHNICAL SPECIFICATIONS

Resistance (max)	75 Ω / km
Impedance	1-100 MHz 100 \pm 15 Ω / 100-250 MHz 100 \pm 20 Ω 250-500 MHz 100 \pm 25 Ω
Capacitance	Nominal at 48 pF/m
Velocity Of Propagation	69% c

MHz	INSERTION LOSS (dB/100 m)	NEXT (dB/100 m)	ACR-N (dB/100 m)	PSNEXT (dB/100 m)	ACR-F (dB/100 m)	PSACR-F (dB/100 m)	RETURN LOSS (dB/100 m)
1	2.1	74.3	72.3	72.3	67.8	64.8	20.0
4	3.8	65.3	61.5	63.3	55.8	52.8	23.0
10	5.9	59.3	53.3	57.3	47.8	44.8	25.0
16	7.5	56.2	48.6	54.2	43.7	40.7	25.0
25	9.4	53.3	43.8	51.3	39.8	36.8	24.3
31.25	10.5	51.9	41.2	49.9	37.9	34.9	23.6
100	19.1	44.3	24.5	42.3	27.8	24.8	20.1
200	27.6	39.8	10.8	37.8	21.8	18.8	18.0
250	31.1	38.3	5.5	36.3	19.8	16.8	17.3
300	34.3	37.1	-	35.1	18.3	15.3	16.8
500	45.3	33.8	-	31.8	13.8	10.8	15.2

CAT.6A F/UTP 500 MHZ

EMEK KABLO CAT.6 F/UTP 500 MHZ



KULLANIM ALANLARI

ISDN - VoIP
 TOKEN RING 4/16 Mbit - 100 VG-AnyLAN
 TP-PMD / TP-DDI - ATM 155, 622,1200 Mbit
 ETHERNET: 10 Base T, 100 Base Tx, 100 Base T4, 1000 Base T, 10 G Base T
 IEEE 802.3at - PoE (Power Over Ethernet)
 Future 802.3af - PoEP (Power over Ethernet Plus)

KABLO YAPISI

İletken	Mono tavlı bakır AWG23
İzolasyon	PO - Poliolenin
Separatör	PO - Poliolenin
Toprak Teli	Mono kalaylı bakır AWG26
Ekran	Al/PET folyo - %100 kapama
Kılıf	PVC veya LSZH - 5024 Mavi RAL
Standartlar	IEC 61156-5 / EN 50288-10-1

TEKNİK ÖZELLİKLER

Direnç (max)	75 Ω / km
Empedans	1-100 MHz $100 \pm 15 \Omega$ / 100-250 MHz $100 \pm 20 \Omega$ 250-500 MHz $100 \pm 25 \Omega$
Kapasite	Nominal 52 pF/m
Yayıma Hızı	69% c

APPLICATION

ISDN - VoIP
 TOKEN RING 4/16 Mbits - 100 VG-AnyLAN
 TP-PMD/TP-DDI - ATM 155, 622,1200 Mbits
 ETHERNET: 10 Base T, 100 Base Tx, 100 Base T4, 1000 Base T, 10 G Base T
 IEEE 802.3at - PoE (Power Over Ethernet)
 Future 802.3af - PoEP (Power over Ethernet Plus)

CONSTRUCTION

Conductor	Solid annealed copper AWG23
Insulation	PO - Polyolefin
Separator	PO - Polyolefin
Drain Wire	Solid tinned copper AWG26
Shielding	Al/PET foil - Coverage 100%
Jacket	PVC or LSZH - Blue RAL 5024
Standards	IEC 61156-5 / EN 50288-10 -1

TECHNICAL SPECIFICATIONS

Resistance (max)	75 Ω / km
Impedance	1-100 MHz $100 \pm 15 \Omega$ / 100-250 MHz $100 \pm 20 \Omega$ 250-500 MHz $100 \pm 25 \Omega$
Capacitance	Nominal 52 pF/m
Velocity Of Propagation	69% c

MHz	INSERTION LOSS (dB/100 m)	NEXT (dB/100 m)	ACR-N (dB/100 m)	PSNEXT (dB/100 m)	ACR-F (dB/100 m)	PSACR-F (dB/100 m)	RETURN LOSS (dB/100 m)
1	2.1	74.3	72.3	72.3	67.8	64.8	20.0
4	3.8	65.3	61.5	63.3	55.8	52.8	23.0
10	5.9	59.3	53.3	57.3	47.8	44.8	25.0
16	7.5	56.2	48.6	54.2	43.7	40.7	25.0
25	9.4	53.3	43.8	51.3	39.8	36.8	24.3
31.25	10.5	51.9	41.2	49.9	37.9	34.9	23.6
100	19.1	44.3	24.5	42.3	27.8	24.8	20.1
200	27.6	39.8	10.8	37.8	21.8	18.8	18.0
250	31.1	38.3	5.5	36.3	19.8	16.8	17.3
300	34.3	37.1	-	35.1	18.3	15.3	16.8
500	45.3	33.8	-	31.8	13.8	10.8	15.2

CAT.6A U/FTP 500 MHZ

EMEK KABLO CAT.6A U/FTP 500 MHZ



KULLANIM ALANLARI

ISDN - VoIP
 TOKEN RING 4/16 Mbit - 100 VG-AnyLAN
 TP-PMD/TP-DDI - ATM 155, 622, 1200 Mbit
 ETHERNET: 10 Base T, 100 Base Tx, 100 Base T4, 1000 Base T, 10 G Base T
 IEEE 802.3af - PoE (Power Over Ethernet)
 Future 802.3at - PoEP (Power over Ethernet Plus)

KABLO YAPISI

İletken	Mono tavlı bakır AWG23
İzolasyon	PO - Poliolefin
Ekran	Bireysel AL/PET folyo - %100 kapama
Toprak Teli	Mono kalaylı bakır AWG26
Kılıf	PVC veya LSZH - RAL 4001 Mor
Standartlar	EIA/TIA 568-B2-10 / IEC 61156-5 Ed2 EN 50288-10-1

TEKNİK ÖZELLİKLER

Direnç (max)	75 Ω / km
Empedans	1-100 MHz 100 \pm 15 Ω / 100-250 MHz 100 \pm 25 Ω 250-500 MHz 100 \pm 25 Ω
Kapasite	Nominal 45 pF/m
Yayıma Hızı	79% c

APPLICATION

ISDN - VoIP
 TOKEN RING 4/16 Mbits - 100 VG-AnyLAN
 TP-PMD/TP-DDI - ATM 155, 622, 1200 Mbits
 ETHERNET: 10 Base T, 100 Base Tx, 100 Base T4, 1000 Base T, 10 G Base T
 IEEE 802.3af - PoE (Power Over Ethernet)
 Future 802.3at - PoEP (Power over Ethernet Plus)

CONSTRUCTION

Conductor	Solid annealed copper AWG23
Insulation	PO - Polyolefin
Shielding	Individual AL/PET foil - Coverage %100
Drain Wire	Solid tinned copper AWG26
Jacket	PVC or LSZH - Violet RAL 4001
Standards	EIA/TIA 568-B2-10 / IEC 61156-5 Ed2 EN 50288-10-1

TECHNICAL SPECIFICATIONS

Resistance (max)	75 Ω / km
Impedance	1-100 MHz 100 \pm 15 Ω / 100-250 MHz 100 \pm 25 Ω 250-500 MHz 100 \pm 25 Ω
Capacitance	Nominal 45 pF/m
Velocity Of Propagation	79% c

MHz	INSERTION LOSS (dB/100 m)	NEXT (dB/100 m)	ACR-N (dB/100 m)	PSNEXT (dB/100 m)	ACR-F (dB/100 m)	PSACR-F (dB/100 m)	RETURN LOSS (dB/100 m)
1	2.1	74.3	72.3	72.3	67.8	64.8	20.0
4	3.8	65.3	61.5	63.3	55.8	52.8	23.0
10	5.9	59.3	53.3	57.3	47.8	44.8	25.0
16	7.5	56.2	48.6	54.2	43.7	40.7	25.0
25	9.4	53.3	43.8	51.3	39.8	36.8	24.3
31.25	10.5	51.9	41.2	49.9	37.9	34.9	23.6
100	19.1	44.3	24.5	42.3	27.8	24.8	20.1
200	27.6	39.8	10.8	37.8	21.8	18.8	18.0
250	31.1	38.3	5.5	36.3	19.8	16.8	17.3
300	34.3	37.1	-	35.1	18.3	15.3	16.8
500	45.3	33.8	-	31.8	13.8	10.8	15.2

CAT.6A F/FTP 500 MHZ

EMEK KABLO CAT.6A F/FTP 500 MHZ



KULLANIM ALANLARI

ISDN - VoIP
 TOKEN RING 4/16 Mbit - 100 VG-AnyLAN
 TP-PMD/TP-DDI - ATM 155, 622, 1200 Mbit
 ETHERNET: 10 Base T, 100 Base Tx, 100 Base T4, 1000 Base T, 10 G Base T
 IEEE 802.3af - PoE (Power Over Ethernet)
 Future 802.3at - PoEP (Power over Ethernet Plus)

KABLO YAPISI

İletken	Mono tavlı bakır AWG23
İzolasyon	PO - Poliolefin
1. Ekran	Bireysel AL/PET folyo - %100 kapama
Toprak Teli	Mono kalaylı bakır AWG26
2. Ekran	ALPET folyo - %100 kapama
Kılıf	PVC veya LSZH - RAL 4001 Mor
Standartlar	EIA/TIA 568-B2-10 / IEC 61156-5 Ed2 EN 50288-10-1

TEKNİK ÖZELLİKLER

Direnç (max)	75 Ω / km
Empedans	1-100 MHz 100 ± 15 Ω / 100-250 MHz 100 ± 20 Ω 250-500 MHz 100 ± 25 Ω
Kapasite	Nominal 45 pF/m
Yayıma Hızı	79% c

APPLICATION

ISDN - VoIP
 TOKEN RING 4/16 Mbits - 100 VG-AnyLAN
 TP-PMD/TP-DDI - ATM 155, 622, 1200 Mbits
 ETHERNET: 10 Base T, 100 Base Tx, 100 Base T4, 1000 Base T, 10 G Base T
 IEEE 802.3af - PoE (Power Over Ethernet)
 Future 802.3at - PoEP (Power over Ethernet Plus)

CONSTRUCTION

Conductor	Solid annealed copper AWG23
Insulation	PO - Polyolefin
Shielding 1	Individual AL/PET foil - Coverage 100%
Drain Wire	Solid tinned copper AWG26
Shielding 2	AL/PET foil - Coverage 100%
Jacket	PVC or LSZH - Violet RAL 4001
Standards	EIA/TIA 568-B2-10 / IEC 61156-5 Ed2 EN 50288-10-1

TECHNICAL SPECIFICATIONS

Resistance (max)	75 Ω / km
Impedance	1-100 MHz 100 ± 15 Ω / 100-250 MHz 100 ± 20 Ω 250-500 MHz 100 ± 25 Ω
Capacitance	Nominal 45 pF/m
Velocity Of Propagation	79% c

MHz	INSERTION LOSS (dB/100 m)	NEXT (dB/100 m)	ACR-N (dB/100 m)	PSNEXT (dB/100 m)	ACR-F (dB/100 m)	PSACR-F (dB/100 m)	RETURN LOSS (dB/100 m)
1	2.0	75.0	73.0	72.0	67.8	64.8	20.0
4	3.7	65.3	61.6	62.3	55.8	52.8	23.0
10	5.8	59.3	53.5	56.3	47.8	44.8	25.0
16	7.4	56.2	48.8	53.2	43.7	40.7	25.0
25	9.2	53.3	44.1	50.3	39.8	36.8	24.3
31.25	10.4	51.9	41.5	48.9	37.9	34.9	23.8
100	19.0	44.3	25.3	41.3	27.8	24.8	20.1
200	27.5	39.8	12.3	36.8	21.8	18.8	18.0
250	31.0	38.3	7.3	35.3	19.8	16.8	17.3
300	34.2	37.1	2.9	34.1	19.8	16.8	17.3
400	40.0	35.3	-4.7	32.3	19.8	16.8	17.3
500	45.3	33.8	-11.5	30.8	19.8	16.8	17.3

CAT.7 S/FTP 600 MHZ

EMEK KABLO CAT.7 S/FTP 600 MHZ



KULLANIM ALANLARI

ISDN - VoIP
 TOKEN RING 4/16 Mbit - 100 VG-AnyLAN
 TP-PMD/TP-DDI - ATM 155, 622, 1200 Mbit
 ETHERNET: 10 Base T, 100 Base Tx, 100 Base T4, 1000 Base T, 10 G Base T
 IEEE 802.3af - PoE (Power Over Ethernet)
 Future 802.3at - PoEP (Power over Ethernet Plus)

KABLO YAPISI

İletken	Mono tavlı bakır AWG23
İzolasyon	PO - Poliolefin
1. Ekran	Bireysel AL/PET folyo - %100 kapama
Toprak Teli	Mono kalaylı bakır AWG26
2. Ekran	Kalaylı bakır örgü
Kılıf	PVC veya LSZH - RAL 4001 Mor
Standartlar	IEC 61156-5 / EN 50288-4-1

TEKNİK ÖZELLİKLER

Direnç (max)	75 Ω / km
Empedans	1-100 MHz $100 \pm 15 \Omega$ / 100-250 MHz $100 \pm 20 \Omega$ 250-600 MHz $100 \pm 25 \Omega$
Kapasite	Nominal 45 pF/m
Yayıma Hızı	79% c

APPLICATION

ISDN - VoIP
 TOKEN RING 4/16 Mbits - 100 VG-AnyLAN
 TP-PMD/TP-DDI - ATM 155, 622, 1200 Mbits
 ETHERNET: 10 Base T, 100 Base Tx, 100 Base T4, 1000 Base T, 10 G Base T
 IEEE 802.3af - PoE (Power Over Ethernet)
 Future 802.3at - PoEP (Power over Ethernet Plus)

CONSTRUCTION

Conductor	Solid annealed copper AWG23
Insulation	PO - Polyolefin
Shielding 1	Individual AL/PET foil - Coverage 100%
Drain Wire	Solid tinned copper AWG26
Shielding 2	Tinned copper braid
Jacket	PVC or LSZH - Violet RAL 4001
Standards	IEC 61156-5 / EN 50288-4-1

TECHNICAL SPECIFICATIONS

Resistance (max)	75 Ω / km
Impedance	1-100 MHz $100 \pm 15 \Omega$ / 100-250 MHz $100 \pm 20 \Omega$ 250-600 MHz $100 \pm 25 \Omega$
Capacitance	Nominal 45 pF/m
Velocity Of Propagation	79% c

MHz	INSERTION LOSS (dB/100 m)	NEXT (dB/100 m)	ACR-N (dB/100 m)	PSNEXT (dB/100 m)	ACR-F (dB/100 m)	PSACR-F (dB/100 m)	RETURN LOSS (dB/100 m)
1	2.0	80.0	78.0	77.0	80.0	77.0	20.0
10	5.7	80.0	74.3	77.0	74.0	71.0	25.0
16	7.2	80.0	72.8	77.0	69.9	66.9	25.0
20	8.1	80.0	71.9	77.0	68.0	65.0	25.0
31.25	10.1	80.0	69.9	77.0	64.1	61.1	25.0
62.5	14.5	75.1	60.6	72.5	58.1	55.1	23.0
100	18.5	72.4	53.9	69.4	54.0	51.0	20.0
200	28.0	68.0	40.0	65.0	49.0	46.0	16.0
300	33.3	65.3	32.0	62.3	44.5	41.5	15.0
600	48.9	60.8	11.9	57.8	38.4	35.4	15.0

CAT.7A S/FTP 1000 MHZ

EMEK KABLO CAT.7A S/FTP 1000 MHZ



KULLANIM ALANLARI

ISDN - VoIP
 TOKEN RING 4/16 Mbit - 100 VG-AnyLAN
 TP-PMD/TP-DDI - ATM 155, 622, 1200 Mbit
 ETHERNET: 10 Base T, 100 Base Tx, 100 Base T4, 1000 Base T, 10 G Base T
 IEEE 802.3at - PoE (Power Over Ethernet)
 Future 802.3at - PoEP (Power over Ethernet Plus)
 Terrestrial TV (Analogue and digital)

KABLO YAPISI

İletken	Mono tavlı bakır AWG22
İzolasyon	PO - Poliölefin
1. Ekran	Bireysel AL/PET folyo - %100 kapama
Toprak Teli	Mono kalaylı bakır AWG26
2. Ekran	Kalaylı bakır örgü
Kılıf	PVC veya LSZH - RAL 1021 Sarı
Standartlar	IEC 61156-5 / EN 50288-9-1

TEKNİK ÖZELLİKLER

Direnç (max)	75 Ω / km
Empedans	1-100 MHz $100 \pm 15 \Omega$ / 100-250 MHz $100 \pm 20 \Omega$ 250-1000 MHz $100 \pm 25 \Omega$
Kapasite	Nominal 45 pF/m
Yayıma Hızı	79% c

APPLICATION

ISDN - VoIP
 TOKEN RING 4/16 Mbits - 100 VG-AnyLAN
 TP-PMD/TP-DDI - ATM 155, 622, 1200 Mbits
 ETHERNET: 10 Base T, 100 Base Tx, 100 Base T4, 1000 Base T, 10 G Base T
 IEEE 802.3at - PoE (Power Over Ethernet)
 Future 802.3at - PoEP (Power over Ethernet Plus)
 Terrestrial TV (Analogue and digital)

CONSTRUCTION

Conductor	Solid annealed copper AWG22
Insulation	PO - Polyolefin
Shielding 1	Individual AL/PET foil - Coverage 100%
Drain Wire	Solid tinned copper AWG26
Shielding 2	Tinned copper braid
Jacket	PVC or LSZH - Yellow RAL 1021
Standards	IEC 61156-5 / EN 50288-9-1

TECHNICAL SPECIFICATIONS

Resistance (max)	75 Ω / km
Impedance	1-100 MHz $100 \pm 15 \Omega$ / 100-250 MHz $100 \pm 20 \Omega$ 250-1000 MHz $100 \pm 25 \Omega$
Capacitance	Nominal at 45 pF/m
Velocity Of Propagation	79% c

MHz	INSERTION LOSS (dB/100 m)	NEXT (dB/100 m)	ACR-N (dB/100 m)	PSNEXT (dB/100 m)	ACR-F (dB/100 m)	PSACR-F (dB/100 m)	RETURN LOSS (dB/100 m)
4	3.7	78.0	78.0	75.0	78.0	7.0	23.0
10	5.8	78.0	74.3	75.0	74.0	71.0	25.0
16	7.3	78.0	72.8	75.0	70.0	66.9	25.0
20	8.2	78.0	71.9	75.0	68.0	65.0	25.0
31.25	10.3	78.0	69.9	75.0	64.0	61.1	23.6
62.5	14.6	75.0	60.6	72.0	58.0	55.1	21.5
100	18.5	72.0	53.9	69.0	54.0	51.0	20.1
300	32.7	65.0	40.0	62.0	44.0	46.0	17.3
600	47.1	61.0	32.0	58.0	38.0	41.5	17.3
1000	61.9	57.0	11.9	54.0	34.0	35.4	17.3
1200	NC	NC	NC	NC	NC	NC	NC

Li2Y(ST)CY TP

EMEK KABLO Li2Y(ST)CY TP



KULLANIM ALANLARI

Bu kablolar veri transfer hızları 10 Mbs. 'e kadar olan sistemlerin kablolanması için uygundur. Örnek olarak RS 422, RS 485, field bus teknolojisinde Interbus, Profibus ve diğer arabirimlerde kullanılır.

KABLO YAPISI

İletken	Çok telli kalaylı bakır iletken
İzolasyon	PE damar izolasyonu
Renk Kodlaması	DIN 47100 veya IEC 708
Büküm	Katlar halinde bükülü çiftler
1. Ekran	Çok telli kalaylı bakır toprak teli
2. Ekran	Kalaylı bakır örgü ekran
Kılıf	Gri PVC dış kılıf

MEKANİK ÖZELLİKLER

Min. Bükme Yarıçapı	10 x Dış Çap
Çalışma Sıcaklığı	Sabit -5°C..... 70°C Hareketli -25°C +70°C

ELEKTİRİKSEL ÖZELLİKLER/ELECTRICAL CHARACTERISTICS

KESİT CROSS-SECTION (mm ²)	ÇALIŞMA VOLTAJI RATING VOLTAGE (V)	TEST VOLTAJI TEST VOLTAGE (V)	İLETKEN ÇEVİRİM DİRENCİ CONDUCTOR LOOP RESISTANCE max.(Ohm/km)	ÇALIŞMA AKIMI RATING CURRENT max.(A)	KAPASİTE CAPACITANCE max.(pF/m)
0.22	250	1500	186	2,5	25,0
0.34	250	1500	115	4,5	20,0
0.50	250	1500	78.4	6,0	18,0

İzolasyon direnci; min. 200Mohm x km

KOD NO. CODE NO.	KESİT CROSS-SECTION mm ²	NOM. KABLO ÇAPI OVERALL DIAMETER mm.	YAKLAŞIK AĞIRLIK APPROX. WEIGHT kg/km	STANDART UZUNLUK STANDARD LENGTH mt
32623301.1	1x2x0,22	5,8	45	(7x0,20 mm.*) 100/1000
32623302.1	2x2x0,22	9,0	83	100/1000
32623303	3x2x0,22	6,6	61	100/1000
32623304	4x2x0,22	7,2	76	100/1000
32623402	2x2x0,34	7,5	62	(7x0,25 mm.*) 100/1000
32623403	3x2x0,34	7,9	72	100/500
32623404	4x2x0,34	8,5	87	100/500
32623502	2x2x0,50	8,3	65	(7x0,30 mm.*) 100/500
32623503	3x2x0,50	8,7	98	100/500
32623504	4x2x0,50	9,5	119	100/500

APPLICATION

These cables are suitable for wiring of data systems with transmission rates up to 10 Mbs. For example type of RS 422 and RS 485, in fieldbus technology for Profibus, Interbus and others are used.

CONSTRUCTION

Conductor	Multi wire tinned copper conductor.
Insulation	Insulation PE. (2Y11)
Colour Code	DIN 47100 or IEC 708
Stranding	Pairs twisted in layers
1. Shield	Multi wire tinned copper drain wire
2. Shield	Tinned copper braid shield.
Sheath	Grey PVC sheath.

MECHANICAL CHARACTERISTICS

Min. Bending Radius	10 x Overall Diameter
Temperature Range	Static -5°C..... 70°C Flexing -25°C +70°C

Li2Y(St)CH TP

EMEK KABLO Li2Y(ST)CH TP



KULLANIM ALANLARI

Bu kablolar veri transfer hızları 10 Mbs. 'e kadar olan sistemlerin kablolanması için uygundur. Örnek olarak RS 422, RS 485, field bus teknolojisinde Interbus, Profibus ve diğer arabirimlerde kullanılır

KABLO YAPISI

İletken	Çok telli kalaylı bakır iletken
İzolasyon	PE damar izolasyonu
Renk Kodlaması	DIN 47100 veya IEC 708
Büküm	Katlar halinde bükülü çiftler
1. Ekran	Çok telli kalaylı bakır toprak teli
2. Ekran	Kalaylı bakır örgü ekran
Kılıf	Gri LSOH dış kılıf

MEKANİK ÖZELLİKLER

Min. Bükme Yarıçapı	10 x Dış Çap
Çalışma Sıcaklığı	Sabit -30°C +80°C Hareketli -5°C..... 70°C

ELEKTİRİKSEL ÖZELLİKLER/ELECTRICAL CHARACTERISTICS

KESİT CROSS-SECTION (mm ²)	ÇALIŞMA VOLTAJI RATING VOLTAGE (V)	TEST VOLTAJI TEST VOLTAGE (V)	İLETKEN ÇEVİRİM DİRENCİ CONDUCTOR LOOP RESISTANCE max.(Ohm/km)	ÇALIŞMA AKIMI RATING CURRENT max.(A)	KAPASİTE CAPACITANCE max.(pF/m)
0.22	250	1500	186	2,5	25,0
0.34	250	1500	115	4,5	20,0
0.50	250	1500	78.4	6,0	18,0

İzolasyon direnci; min. 200Mohm x km

KOD NO. CODE NO.	KESİT CROSS-SECTION mm ²	NOM. KABLO ÇAPI OVERALL DIAMETER mm.	YAKLAŞIK AĞIRLIK APPROX. WEIGHT kg/km	STANDART UZUNLUK STANDARD LENGTH mt
32623301.1H	1x2x0,22	5,8	45	(7x0,20 mm.*) 100/1000
32623302.1H	2x2x0,22	9,0	83	100/1000
32623303.H	3x2x0,22	6,6	61	100/1000
32623304.H	4x2x0,22	7,2	76	100/1000
32623402.H	2x2x0,34	7,5	62	(7x0,25 mm.*) 100/1000
32623403.H	3x2x0,34	7,9	72	100/500
32623404.H	4x2x0,34	8,5	87	100/500
32623502.H	2x2x0,50	8,3	65	(7x0,30 mm.*) 100/500
32623503.H	3x2x0,50	8,7	98	100/500
32623504.H	4x2x0,50	9,5	119	100/500

APPLICATION

These cables are suitable for wiring of data systems with transmission rates up to 10 Mbs. For example type of RS 422 and RS 485, in fieldbus technology for Profibus, Interbus and others are used.

CONSTRUCTION

Conductor	Multi wire tinned copper conductor.
Insulation	Insulation PE. (2Y11)
Colour Code	DIN 47100 or IEC 708
Stranding	Pairs twisted in layers
1. Screen	Multi wire tinned copper drain wire.
2. Shield	Tinned copper braid shield.
Sheath	Grey LSOH sheath.

MECHANICAL CHARACTERISTICS

Min. Bending Radius	10 x Overall Diameter
Temperature Range	Static -30°C +80°C Flexing -5°C..... 70°C



Merkez: H. Rifatpaşa Mah. Perpa Ticaret Merkezi A Blok Kat: 4-5 No:135/137 Okmeydanı Şişli / İSTANBUL
Fabrika: Sahil Boyu Sokak, Sancak Tepe Mah. No: 250 Kınalı Mevkii Çanta Köyü Silivri / İSTANBUL

T : +90 212 210 39 55-56

 [emekkablo](#)

 [emekkablo](#)

 www.emekkablo.com