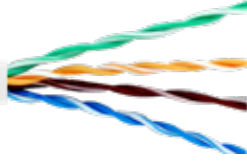


CAT.5E U/UTP

EMEK KABLO CAT.5E U/UTP



KULLANIM ALANLARI

ISDN - VoIP
 TOKEN RING 4/16 Mbit - 100 VG-AnyLAN
 TP-PMD / TP-DDI - ATM 155, 622,1200 Mbit
 ETHERNET: 10 Base T, 100 Base Tx, 100 Base T4, 1000 Base T

KABLO YAPISI

İletken	Mono tavlı bakır AWG24
İzolasyon	PO - Poliolen
Kılıf	PVC veya LSZH - 7035 Gri RAL
Standartlar	IEC 61156-5 / N 50288-3-1

TEKNİK ÖZELLİKLER

Direnç (max)	94 Ω / km
Empedans	1-100 MHz 100 \pm 15 Ω
Kapasite	Nominal 50 pF/m
Yayıma Hızı	69% c

APPLICATION

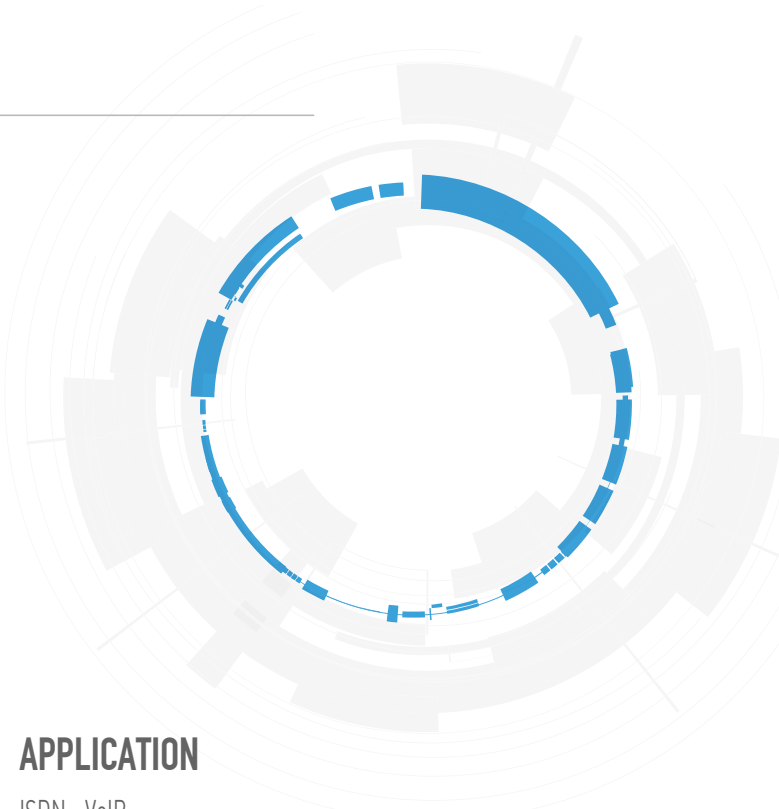
ISDN - VoIP
 TOKEN RING 4/16 Mbits - 100 VG-AnyLAN
 TP-PMD/TP-DDI - ATM 155, 622,1200 Mbits
 ETHERNET: 10 Base T, 100 Base Tx, 100 Base T4, 1000 Base T

CONSTRUCTION

Conductor	Solid annealed copper AWG24
Insulation	PO - Polyolefin
Jacket	PVC or LSZH - Grey RAL 7035
Standards	IEC 61156-5 / EN 50288-3-1

TECHNICAL SPECIFICATIONS

Resistance (max)	94 Ω / km
Impedance	1-100 MHz 100 \pm 15 Ω
Capacitance	Nominal at 50 pF/m
Velocity Of Propagation	69% c



MHz	INSERTION LOSS (dB/100 m)	NEXT (dB/100 m)	ACR-N (dB/100 m)	PSNEXT (dB/100 m)	ACR-F (dB/100 m)	PSACR-F (dB/100 m)	RETURN LOSS (dB/100 m)
1	2.0	65.3	63.3	62.3	63.8	60.8	20.0
4	4.1	56.3	52.2	53.3	51.8	48.8	23.0
10	6.5	50.3	43.8	47.3	43.8	40.8	25.0
16	8.2	47.2	39.1	44.2	39.7	36.7	25.0
20	9.3	45.8	36.5	42.0	37.8	34.8	25.0
25	10.4	44.3	33.9	41.3	35.8	32.8	24.3
31.25	11.7	42.9	31.2	39.9	33.9	30.9	23.6
62.5	17.0	38.4	21.4	35.4	27.9	24.9	21.5
100	22.0	35.3	13.3	32.3	23.8	20.8	20.1